

DUVEET

Beyond Relief!

Always to be with you for the rescue
in any other disasters

DUVEET
SAVING LIVES, SAVING HOPE

DUVEET Co. Ltd
Banwolnam St. 88th Hwasung-si, Gyeonggi-do, 18383, Republic of Korea
Tel: +82-31-217-7011~2 | Fax: +82-31-217-7013 | caleb@duveet.com

www.duveet.com

Let experience, The More Powerful!!

DUVEET



BEYOND RELIEF

Saving lives, Restoring Hope

Duveet company limited manufactures tactical rescue, safety and portable illumination tools for disaster relief operations. Our products range from HID searchlights, LED flashlights, portable emergency work-lights and personal alarm safety system.

The fields of application for our products include; firefighting, military, law enforcement, disaster management, aviation, search and rescue, construction/maintenance, emergency rescue services, industrial security, camping and other outdoor recreational activities

We are best known for our dedication to providing rescue, military, and law enforcement agencies with superior illumination and rescue equipment. We have a long standing commitment of establishing mutually beneficial relationships with our partners and end users all over the world.

Go farther

Advanced Tactical Lights

No more tears, No more sorrows
Your No.1 lighting source for relief!

Our products are all designed and manufactured in our own facility to ensure and guarantee the best quality to our clients.

DUVEET

www.duveet.com

Personal Alarm Safety System



DA-P1

Personal Alarm Safety Device

+95dB Alarm sound | **IP67 Water Resistant**
Reinforced plastic



Motionless Alarm

Motionless alarm sounds of +75dB and +95dB in the event of an emergency

Temperature Alarm Sensor

Temperature alarm sound of +95dB in the event surrounding temperature is over 100°C

Water Resistant

Capable of being used in the presence of light rain and shower as it has an IP67 water resistance rating.

Applications

Ideal for firefighting, emergency rescue & recovery, disaster management, military tasks, mining etc.

DA-P1 is an intelligent alarm device which alerts people nearby in the event a rescue worker is in distress or in a state of emergency (unconscious or motionless). In the event of an emergency, the motionless sensor alarm automatically sounds with a pre-alarm of +75dB (in 15sec) and a main alarm +95dB (in 10 additional sec). The time period of the alarm is fully customizable. The alarm also automatically sounds if the surrounding temperature is over 100°C. In addition, DA-P1 is equipped with a screen to display current local time and working hours.



8-DIGIT DISPLAY
(Working hours/Current time)



EMERGENCY ALARM BUTTON
(Instantly triggers the alarm)



RED ACTIVATION KEY
(Powers on the device)



STEEL BELT CLIP & HOOK
(Latches on the suit)

PERFORMANCE SPECIFICATIONS

Alarm: Pre-alarm, Main alarm
Temperature sensor alarm

Run time:

Power on standby: 25hrs - 35hrs ± 30min

Main alarm: 12hrs ± 30min

Charging time: 180min ± 30min

140g (with battery)

Size: 93(H) x 56(W) x 26.5(H) mm

TECHNICAL SPECIFICATIONS

Water resistant (IP67)

Display: 8-digit display,
working time, current time

Material: Heat resistant, Flame resistant,
Impact resistant, Reinforced plastic

Battery type: Lithium polymer

Battery Capacity: 1,400mAh

Battery indicator: 5 steps

STANDARD PACKAGING

Main body

String

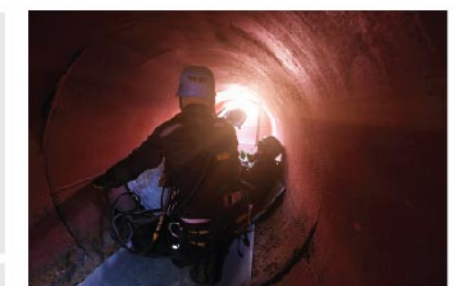
AC adapter

Name tag

ALARM

Pre-alarm : +75dB 15 seconds

Main alarm : +95dB 10 seconds
(After pre-alarm)



DUVEET

www.duveet.com

DA-M100

PASS Device

Personal Alarm Safety System

For immediate response to rescue you and your colleague



During the rescue or fire-fighting operations, fire-fighting officers might encounter dangerous situations such as falling unconscious or immotile. In those cases, DA-M100 could be the lifeline for them to notice their emergencies for an immediate help. DA-M100 would activate an audible and optical alarm signal to alert, if it failed to detect movements from its possessor for specific period of time. Also, it is possible to activate the alarm signal manually by pressing a button. Unlike ordinary PASS, it can help to search the person who requires help through not only audible signals but also bluetooth module system in it.

Components

- Main Body
- Charging Cable
- Name Tag
- Case
- Charger
- Strap



Specification

[PERFORMANCE] •Model Name : DA-M100 •Alarm: 95dB @ 1 Meter •OLED Display •Thermal Sensor •Reinforced Plastic Case •Heat/Shock/Flame Resistant •IP67 Water/Dust Resistant •Battery Status Checking System

[TECHNICAL] •Charging Time: 180min •Charging: wire/wireless •Operating Time: 20hrs ± 30min(At power on) •Operating Time: 30min(At Alarm operating) •Weight: 160g •Dim: 63(H) x 103(W) x 30(D) mm



DA-M100 is not only complying with Korean Fire Institute (KFI) Regulation, but it also provides critical site information such as officers' status in close to real-time. To make better and immediate decision or response in operation, the commander or headquarter have reported quick overview for the site, using DA-RM100 (Router) and specialized software.

PACKAGE 1 Integrated Control System (with Server)

Integrated Control System is software with communicating devices includes individual server. With these, collect data from every router and show a comprehensive result. It provides practical information includes the status of the field officers boarding time on the rescue vehicle, arriving time at disaster scene, SOS alarm, location, ambient temperature, as well as conducting simple pre-set orders. This helps to manage officers' safety, manpower management in the disaster scene.



PACKAGE 2 Software Invented by Duveet

Through Duveet's own network system based on RF module, it helps to manage many issues such as officers' safety, manpower deployment, and even their current status, etc.



PACKAGE 3 Phone Application + DA-M100

With the mobile phone application, it helps tracking the officers' activities such as entry, exit or retreat time in that area. Also, it uses bluetooth signal to communicate between phone and PASS which allows users to track location for PASS and its possessor by using the strength of the signal.



PACKAGE 4. Software by Duveet + Mobile Phone Application for tracking down officers' location.

Combination Package 2 and Package 3, which allows users to monitor their people's activities on a phone and a computer. While keeping the beneficial points from both packages, it costs less compares to building a server and its maintenance (Package 1).



DA-F10

Multifunctional Right Angle Flashlight

10W LED | +95dB Alarm sound | IP67 Water Resistant | Laser pointer

Portable Emergency Lighting System



10W POWER LED LIGHT



EMERGENCY ALARM BUTTON
(Instantly triggers the alarm)



RED LASER BEAM POINTER



STEEL BELT CLIP & HOOK
(Latches on the suit)

DA-F10 is multifunctional 10W LED right angle flashlight emitting light capable of penetrating through smoke and fog during fire rescue and other disaster rescue operations. The light has an output beam of 900 lumens and three light modes (max-min-strobe). DA-F10 has an in-built alarm sensor which sounds automatically with a pre-alarm of +75dB (in 15secs) and a main alarm of +95dB (in 10 additional secs) in the event the rescue worker should fall unconscious. The alarm can also be directly triggered when necessary. In addition, it is equipped with a 5mW red laser pointer for locating objects in a smoke-filled environment.

PERFORMANCE SPECIFICATIONS

10W Power / 900Lumens
Alarm: Pre-alarm, Main alarm
Run time:
Maximum: 150min ± 30min
Minimum: 390min ± 30min
Charging time: 2hrs ± 30min
410g (with battery)
Size: 59(W) x 76.5(L) x 167.5(H) mm

TECHNICAL SPECIFICATIONS

Water resistant (IP67)
Switch mode
: 3 Step (Max-> Min-> Strobe)
Material: Heat resistant, Flame resistant,
Impact resistant, Reinforced plastic
Battery type: Lithium-ion
Battery Capacity: 7.2V 2,500mAh
Battery indicator: 3 color 6 steps

STANDARD PACKAGING

Main body
AC adapter

ALARM

Pre-alarm : +75dB 15 seconds
Main alarm : +95dB 10 seconds
(After pre-alarm)



Suitcase form factor

Approximately the size of a carrier suitcase with a collapsible handle and elastic wheels for easy transport

Rugged design

The body is made from hard plastic capable of being used in rough terrains and environments.

Deployment

Set up takes seconds as there is no need to screw components together.

Water Resistant

Capable of being used in the presence of light rain and shower as it has an IP67 water resistance rating of LED light.

Applications

Ideal for urgent construction/maintenance, emergency rescue & recovery, outdoor camping activities, disaster management, military tasks

DUVEET

www.duveet.com

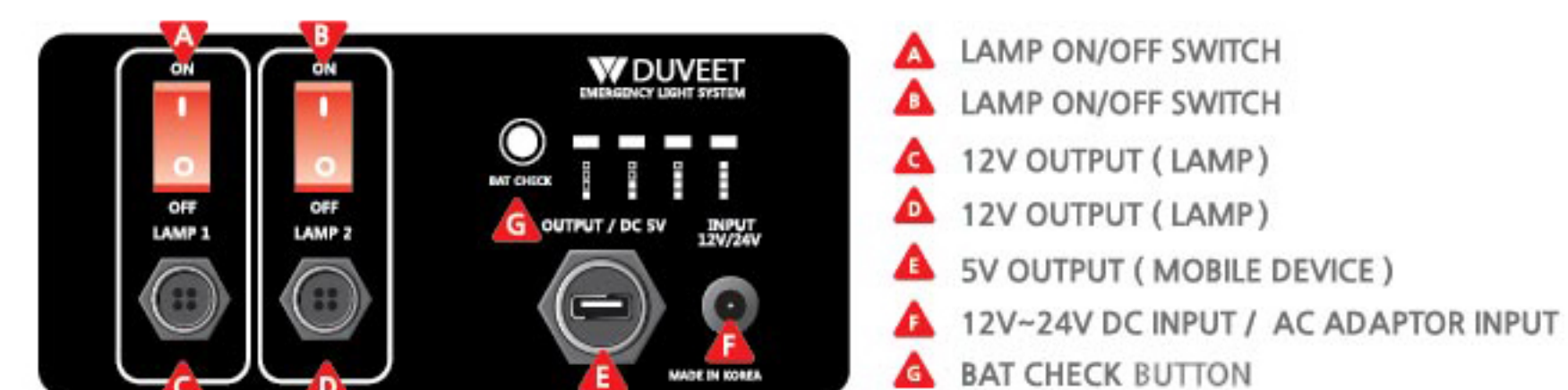
DV-EL1000

Portable Emergency Work-Light

+21W LED Light head | **Water Resistant** | **14hrs Runtime**

DV-EL1000 is a portable standby work light designed to provide lighting in emergencies or in areas of no access to power supply. It is a +21-watt LED work-light with a 360-degree adjustable and exchangeable light head. The light head can be replaced with other light heads such as spotlight and flood-lights. This fully portable unit easily unfolds out of the carrier case within seconds with the light tower as high as 2 meters. Powered by a rechargeable lithium-ion battery, DV-EL1000 emits a wide flood of light over a period of 14hrs with one light head.

Panel function



DV-EL1000S



Front



Handling

PERFORMANCE SPECIFICATIONS

Basic lamp: +21W LED work-light
Up to 14hrs of run time (EL1000)
Up to 7hrs of run time (EL1000S)
Up to 50000hrs of lamp life
Color temperature: 6000K
18.2kg (include lamp)
Size: 350(W) x 260(L) x 570(H) mm (Case)
350(W) x 260(L) x 2100(H) mm (Setup)

TECHNICAL SPECIFICATIONS

Water resistant
Battery type: Lithium-ion
Battery Capacity: DC14.6V 22,000mAh
Charging voltage. IN
: AC110 - 220V (Adapter)
: DC12V - 24V (Car cigarette charger)
Charging voltage. OUT
: 19V (Lamp) / 5V (Mobile device)

Searchlights

Rugged

Aerospace aluminum body design with a battery designed to be reliable in the harshest conditions (from extreme heat to extreme cold conditions)

Powerful

Our searchlights, powered by a lithium ion battery, provide a strong light beam covering areas over kilometers away.

Waterproof

Designed to reliable in the presence of rain & underwater conditions.

Accessories

Color filters, Light diffusion filters, IR filter, UV filter, Protection cover

Applications

Ideal for firefighting, law enforcement, military, maritime, mining, border control, construction, aviation, industry, forest patrol, agriculture or areas where massive clean light is required.

DUVEET

www.duveet.com

H-gear

High power to see farther



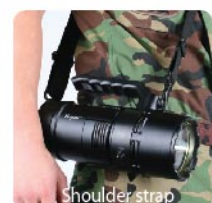
43W Power | 1.2km Distance | 4,100 Lumens | Water Resistant | 90mins Runtime



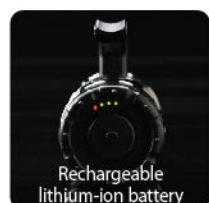
Aluminium body design



Power switch



Shoulder strap



Rechargeable lithium-ion battery

H-gear, our flagship model, is our most powerful and most compact searchlight with a highly efficient 43-watt ballast application and a highly sensitive mirror reflector capable of throwing a powerful light beam over 1.2 kilometers away. To ensure ease of use and portability, H-gear is designed with an ergonomic handle with an easy to reach power switch. Under 25cm long and just over 2kg in weight, H-gear is Duveet's most powerful searchlight capable of generating a beam of 4,100 lumens with over thousands of hours of lamp life.



PERFORMANCE SPECIFICATIONS

43W Power / 4,100Lumens
1.2km Illumination distance
Up to 90min of run time
Up to 2,500hrs of lamp life
Color temperature: 4,300K
Charging time: 2hrs ± 30min
1.63kg (without battery)
Battery weight: 455g
Size: 91(W) x 244(L) x 144(H) mm

TECHNICAL SPECIFICATIONS

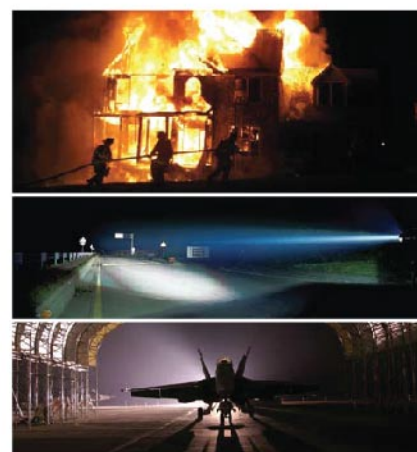
Water resistant IP68
Battery type: Lithium-ion
Power switch
Battery Capacity: DC14.6V 5,500mAh
Operation current: 4A
Input voltage: DC10 - 18V
Charging voltage. IN: AC100 - 240V
Charging voltage. OUT: DC19V / 3.16A

ACCESSORIES

Color/UV/IR filters
Light Diffusion filters
Protection cover

STANDARD PACKAGING

Main body
1 Battery
AC Charger
Shoulder strap
Soft bag



M-gear

Extended battery life to see longer



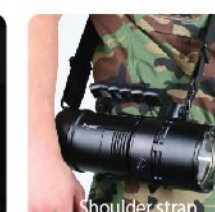
35W Power | 1.0km Distance | 3,500 Lumens | Water Resistant | 120mins Runtime



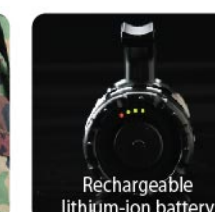
Aluminium body design



Power switch



Shoulder strap



Rechargeable lithium-ion battery



PERFORMANCE SPECIFICATIONS

35W Power / 3,500Lumens
1.0km Illumination distance
Up to 120min of run time
Up to 3,000hrs of lamp life
Color temperature: 4,300K
Charging time: 2hrs ± 30min
1.5kg (without battery)
Battery weight: 455g
Size: 98.8(W) x 246(L) x 144(H) mm

TECHNICAL SPECIFICATIONS

Water resistant IP 68
Battery type: Lithium-ion
Power switch
Battery Capacity: DC14.6V 5,500mAh
Operation current: 3.5A
Input voltage: DC10 - 18V
Charging voltage. IN: AC100 - 240V
Charging voltage. OUT: DC19V / 3.16A

ACCESSORIES

Color/UV/IR filters
Light Diffusion filters
Protection cover

STANDARD PACKAGING

Main body
1 Battery
AC Charger
Shoulder strap
Soft bag



MR-gear

High power to see under water



43W Power | 1.2km Distance | 4,100 Lumens | 100m Waterproof | 90mins Runtime

Flashlights

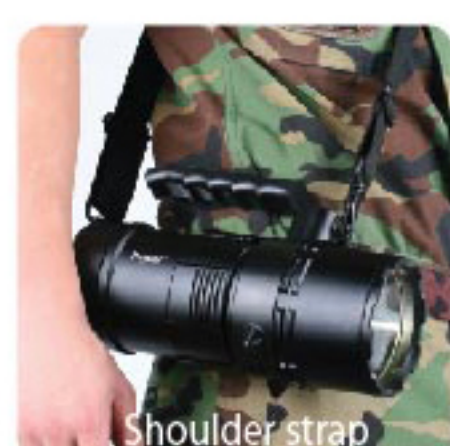
MR-gear is an extremely powerful 43-watt searchlight for diving and underwater operations. Designed to be used at depths of a 100 meters underwater, MR-gear emits a strong light beam of 4,100 lumens with an illumination throw distance of 1.2 kilometers. The application of the pressure sensitive piezo switch provides a secure on/off power switch and ensures the complete waterproofness of the gear. MR-gear is designed for professionals who require ultra bright portable light for underwater activities.



Aluminium body design



Power switch



Shoulder strap



Rechargeable lithium-ion battery



PERFORMANCE SPECIFICATIONS

43W Power / 4,100Lumens

1.2km Illumination distance

Up to 90mins of run time

Up to 2,500hrs of lamp life

Color temperature: 4,300K

Charging time: 2hrs ± 30mins

1.63kg (without battery)

Battery weight: 455g

Size: 103(W) x 253(L) x 150(H) mm

TECHNICAL SPECIFICATIONS

100M Waterproof (IP68)

Battery type: Lithium-ion

Piezo switch

Battery Capacity: DC14.6V 5,500mAh

Operation current: 4A

Input voltage: DC10 - 18V

Charging voltage. IN: AC100 - 240V

Charging voltage. OUT: DC19V / 3.16A

ACCESSORIES

Color/UV/IR filters

Light Diffusion filters

Protection cover

STANDARD PACKAGING

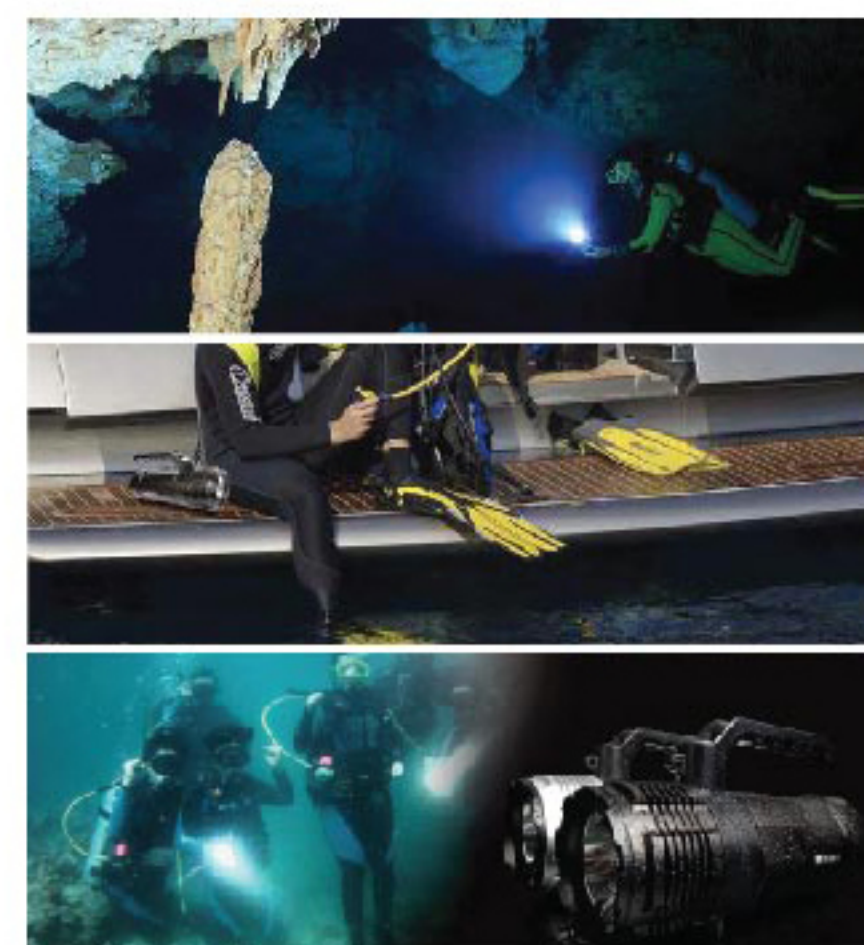
Main body

1 Battery

AC Charger

Shoulder strap

Soft bag



Rugged

Aerospace aluminum body design with a battery designed to be reliable in the harshest of environments

Beam

Our flashlights provide a strong light beam covering areas over hundreds of meters away. Rechargeable lithium ion batteries power all our flashlights with our strongest light beam at 900lumens

Waterproof

Designed to reliable in the presence of rain & underwater conditions.

Accessories

Light diffusion filters

Applications

Ideal for firefighting, scuba diving, underwater exploration, law enforcement, military, maritime, mining, border control, construction, aviation, industry, forest patrol, agriculture.

DUVEET

www.duveet.com

DV-A90

90 degree swivel head flashlight

10W Power | 140mins Runtime | IPx8 | Water Resistant | USB Charge

FEATURES

90 degree swivel head

Magnetic USB charger

Magnetic base

Steel clip

Light weight and compact LED Portable flashlight

DV-A90 uses CREE LED Module which is the best quality in the world so high efficient brightness with high quality reflector which is designed by Duveet`s unique technology.

Also DV-A90 has its swivel function head which is adjustable from 0° to 90° degrees head angle.

If you use helmet bracket (optional), you can adjust using angle more efficiently.

Helmet Bracket design can be customized to be fit on various helmet design as per client`s requirement.



DV-A90 has magnetic recharging port on its light head, it makes easy to recharge.

Also magnet applied in the rear battery cap, it can be easily fixed on metal material.

At the Fire fighting, Rescue, Police, Military, Provincial Gov. Dept, our DV-A90 can be used very efficiently.



Magnet Recharging port



90° swivel head



Convenient battery replacement



Compatible with various helmets



PARTS



Left & Right angles



Front & Back sides



Upright



Rear magnetic base



Magnetic charger

Specification

[PERFORMANCE] •Model Name : DV-A90 •10WPower •Upto 50,000 hours lamp life •More than 140 min operating •128g including battery •Switch Mode: 3 steps (Max - Mid - Strobe) •Size : 108 x 24.5 x 36 mm

[TECHNICAL] •Water resistant (IPX8) •Battery Type: Lithium Ion •Battery Capacity: DC3.6V, 3,000mA •Charging Time: 240min at magnet charging •Charging Voltage: DC4.2V, 900mA

[STANDARD PACKAGING] •Main Body •Battery •Charging Cable •String •Pouch

QU-V10

Brilliant underwater flashlight (Scuba diving)



10W Power | 300m Illumination Distance | 900 Lumens | 100m Waterproof | 3 Light Modes

QU-V10 is our most powerful LED flashlight. It is a sturdy and durable 10-watt LED flashlight designed to be used for underwater exploration. It can reach diving depths of up to 100m with a brightness of 900 lumens and an illumination throw distance of up to 300meters. This brilliant underwater flashlight is equipped with a magnetic power switch with controls for three (3) light modes.



100M Waterproof



Aluminium body design



Magnetic power switch



Rear battery cap



PERFORMANCE SPECIFICATIONS

10W Power / 900Lumens
300m Illumination distance
2hrs - 14hrs of run time
Up to 50,000hrs of lamp life
Color temperature: 6,000K
Charging time: 3hrs ± 30min
260g (without battery)
Battery weight: 47g x 2EA
Size: 49(27)(H) x 223(L) mm

TECHNICAL SPECIFICATIONS

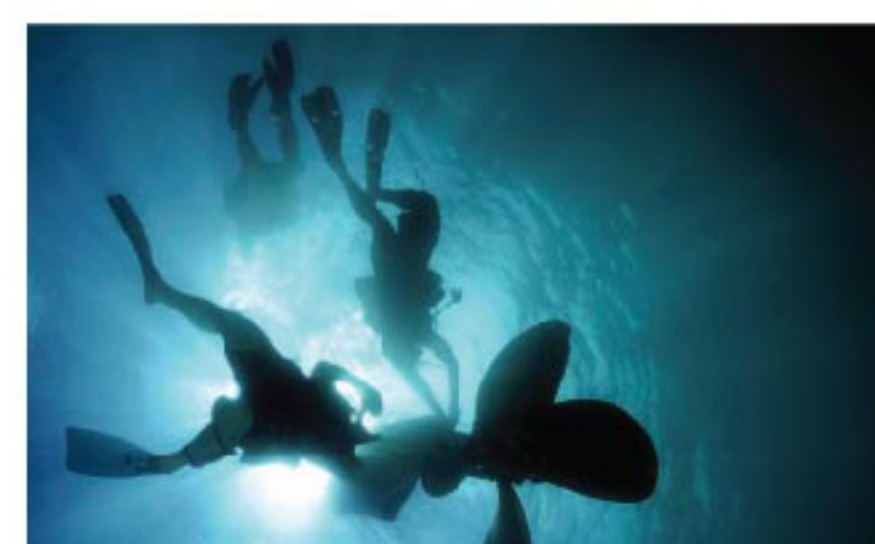
100M Waterproof (IP68)
Magnetic switch
Switch mode
: 3 Step (Max-> Min-> Strobe)
Battery type: Lithium-ion
Battery Capacity: DC3.7V 2600mAh x 2EA
Charging voltage. IN: AC100 - 240V
Charging voltage. OUT: DC4.2V / 1A

ACCESSORIES

Light Diffusion filters

STANDARD PACKAGING

Main body
Charging cradle
String
2 Li-ion battery
AC adapter
Pouch
Hardcase (option)



100m Waterproof for underwater exploration



Quantum

QU-V1

Helmet-mount flashlight



PERFORMANCE SPECIFICATIONS

5W Power
100m Illumination distance
3hrs - 6hrs of run time
Up to 50,000hrs of lamp life
Charging time: 3hrs ± 30min
110g (without battery)
Battery weight: 47g
Size: 34(H) x 142(L) mm

TECHNICAL SPECIFICATIONS

Water resistant
Switch mode
: 3 Step (Max-> Min-> Strobe)
Battery type: Lithium-Ion
Battery Capacity: DC3.7V 2,600mAh
Charging voltage. IN: AC100 - 240V
Charging voltage. OUT: DC5V / 1A

STANDARD PACKAGING

Main body
Charging cradle
String
1 Li-Ion battery
AC adapter
Pouch
Helmet bracket (option)



5W Power | 100m Illumination Distance | 700 Lumens | Water Resistant | 3 Light Modes

MC-P1

Compact flashlight

PERFORMANCE SPECIFICATIONS

5W Power
90min - 210min of run time
Up to 50,000hrs of lamp life
Color temperature: 7,000K
52g (without battery)
Battery weight: 16g
Size: 26(H) x 96(L) mm

TECHNICAL SPECIFICATIONS

Water resistant
Switch mode
: 3 Step (Max-> Min-> Strobe)
Battery type: CR123
Battery Capacity:
DC3V 1,500mAh

STANDARD PACKAGING

Main body
S-biner
1 CR123 battery
String



5W Power | 52g (without battery) | 3 Light Modes | 400 Lumens